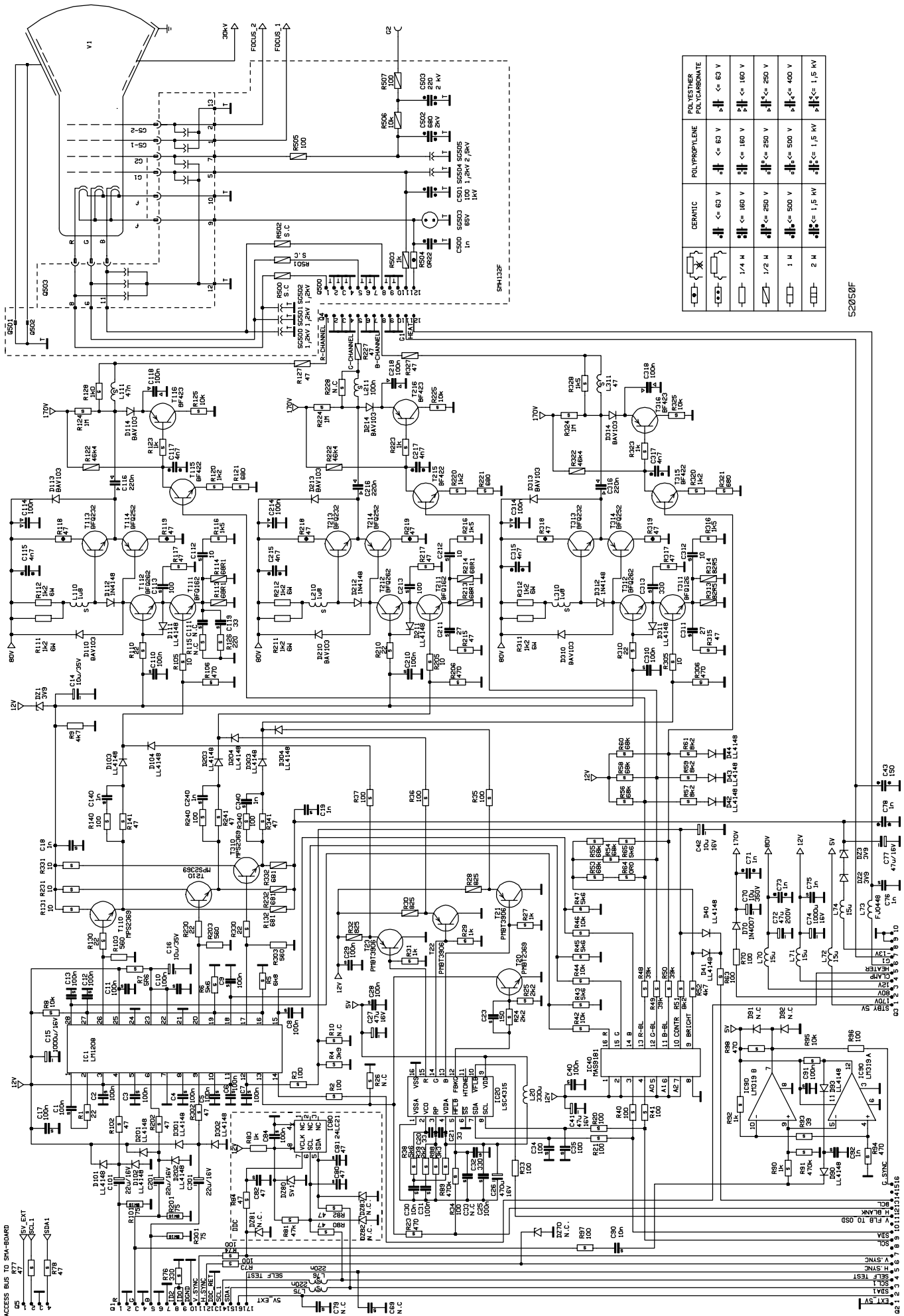


Part Number	Description	PG	Item Number
JM0307	TR BFQ262 N 65V 400MA 1GHZ	12	TY 112 212 312
JM4116	TR PMBT2369 N 15V 200MA	3	TY 020
JM4117	TR PMBT3906 P 40V 200MA	3	TY 021 022 023
JZ0017	SILICONE INSUL.10X13X0,22	2	TY 113 114 213 214 313 314
LM0476	IC LM319 DUAL COMPARATOR	14	ICY 090
LM0923	IC MAS9181N 8-BIT OCT.DAC	15	ICY 040
LM0925	IC LM1208N VIDEO AMP.3-CH 130MHZ	17	ICY 001
LM0933	IC LSC4315 OSD W/NOKIA CHARACTERS	20	ICY 020
QK1471	ROW CONN 1X16 2,54 180	5	Q 001
LM4418A	IC DUAL MODE 1K EEPROM DDC STM	12	IC 080
QK1707	PICOFLEX HEADER 1X16	4	Q 002
QK1704	PICOFLEX HEADER 1X10	4	Q 003
QK1587	COOLING & SUPP.PART FOR RESISTOR	1	RY 111 112 211 212 311 312
QM1008	PICOFLEX ASSY BI-DC 12-POS 70MM	9	Q 004
UC3424	FASTENING SPRING	2	TY 112 212 312
UC6647	HEATSINK	9	TY 113 114 213 214 313 314
UC6668	FASTENING SPRING	2	TY 113 114 213 214 313 314
UC6690	HEATSINK	6	TY 112 212 312
UC6816	HEATSINK	17	
UC6752	WASHER	1	
UP0118	CERAMIC HEATSINK ISOLATOR	8	TY 112 212 312

SMH132 CRT-MODULE

AB0585	R NF 0W25 0R22 J CF	1	R 504
AD0349	R COMP 0W5 100R K	1	R 505 507
AD0373	R COMP 0W5 1K0 K	1	R 503
AD0397	R COMP 0W5 10K K	1	RY 506
CA0306	C CER 220P M 2KV	2	C 503
CA0318	C CER 680P M 2KV	2	C 501 502
CC0200	C CER 1N0 K 500V	1	C 500
QK0851	TAP CONN RTM 1,3/5/8.002	1	Q 501 502
QK1603	CRT SOCKET W/DOUBLE FOCUS SNAP-IN	12	Q 503
QT0002	SPARK GAP 1,2KV +-500V R=5,0MM	3	SG 500 501 502 504
QT0004	SPARK GAP 2,5KV +-500V R=5,0MM	5	SG 505
QT0217	GLIMM LAMP 65V	3	SG 503
QK1701	PICOFLEX HEADER 1X04	3	Q 005
QK1705	PICOFLEX HEADER 1X12	4	Q 500
WC0036	HEX PT-SCREW	1	
WC0446	HEX PT-SCREW 2,9X8	1	

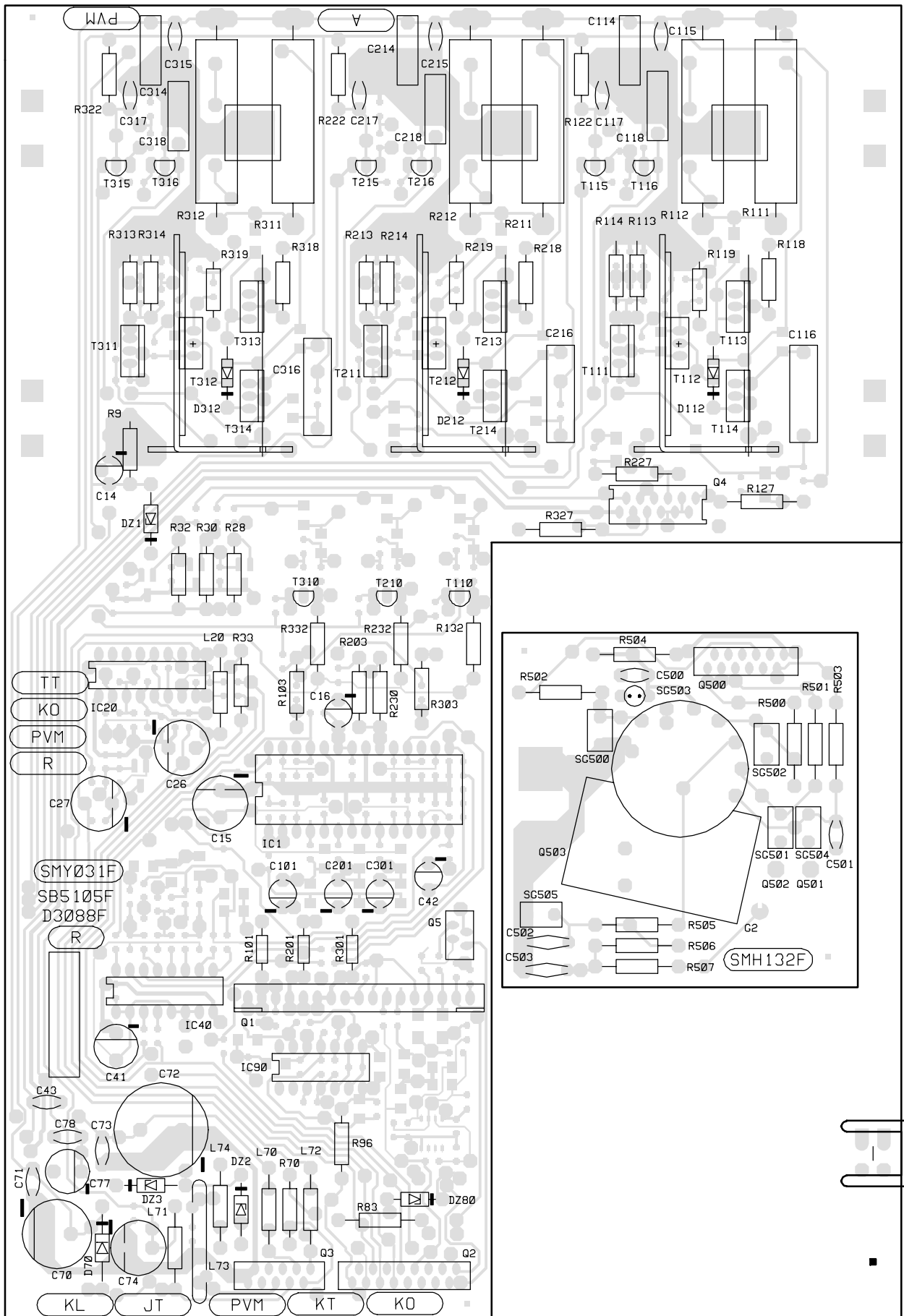


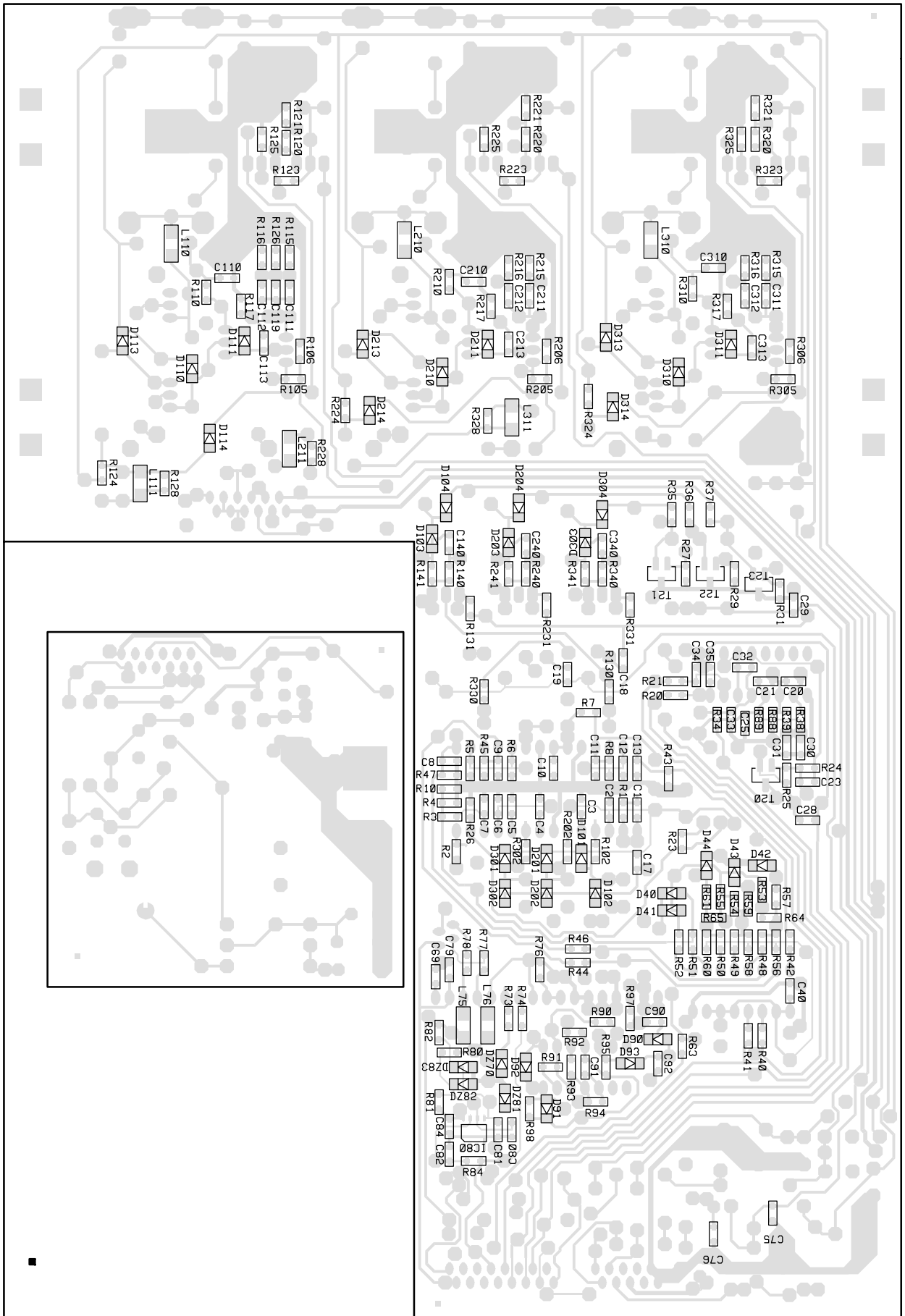
Symbol	Material	Value	Dielectric	Voltage
	CERAMIC	$\leq 63\text{ V}$		$\leq 63\text{ V}$
	POLYPROPYLENE	$\leq 63\text{ V}$		$\leq 160\text{ V}$
	POLYESTHER	$\leq 63\text{ V}$		$\leq 160\text{ V}$
	POLYCARBONATE	$\leq 63\text{ V}$		$\leq 160\text{ V}$
		1/4 H		$\leq 250\text{ V}$
		1/2 H		$\leq 250\text{ V}$
		1 H		$\leq 500\text{ V}$
		2 H		$\leq 1,5\text{ kV}$

S2050F

ACCESS BUS TO SMA-BOARD
 05 12V EXT
 06 12V EXT
 07 SCL1
 08 SDA1

02 1 2 3 4 5 6 7 8 9 10 11 12 13 14 15 16
 01 1 2 3 4 5 6 7 8 9 10 11 12 13 14 15 16





SMY031

D3088

06.96

Page 6



445P