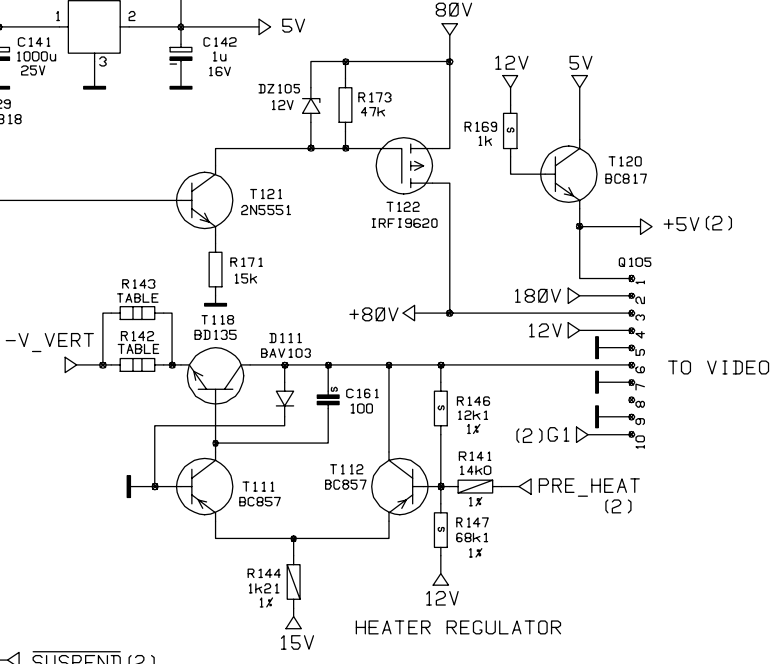
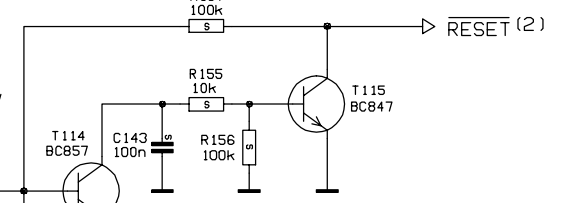
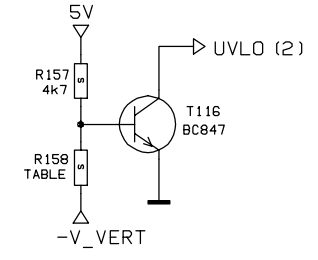


	SMA231	SMA247	FM3410	FM3413
M103	FM3407	FM3410	FM3413	
-V_VERT	-10V	-12V	-13V	
-V_AUDIO	-10V	-12V	-13V	
+V_AUDIO	+10V	+12V	+13V	
R142	5R6/2W	22R/2W	22R/2W	
R143	N.C	22R/2W	22R/2W	
R158	10k	12k	12k	
R137	46k4	33k2	46k4	
R138	5k62	4k64	5k62	



NB. Safety components marked with must be replaced with original or approved components only.
All printed boards and the back cover are also safety components

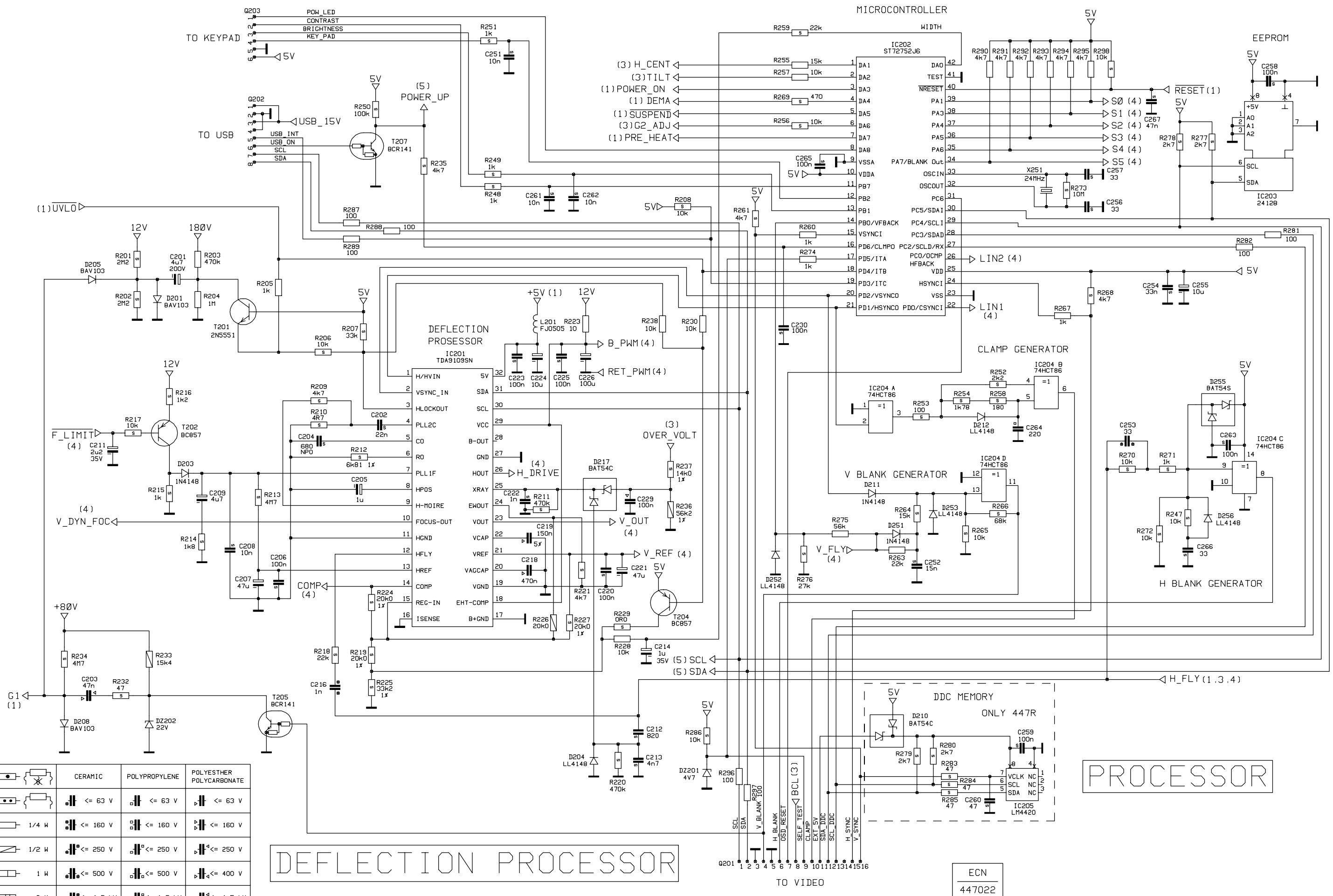
	CERAMIC	POLYPROPYLENE	POLYESTHER POLYCARBONATE
	$\leq 63\text{ V}$	$\leq 63\text{ V}$	$\leq 63\text{ V}$
	$\leq 160\text{ V}$	$\leq 160\text{ V}$	$\leq 160\text{ V}$
	$\leq 250\text{ V}$	$\leq 250\text{ V}$	$\leq 250\text{ V}$
	$\leq 500\text{ V}$	$\leq 500\text{ V}$	$\leq 400\text{ V}$
	$\leq 1,5\text{ kV}$	$\leq 1,5\text{ kV}$	$\leq 1,5\text{ kV}$

ECN
447022

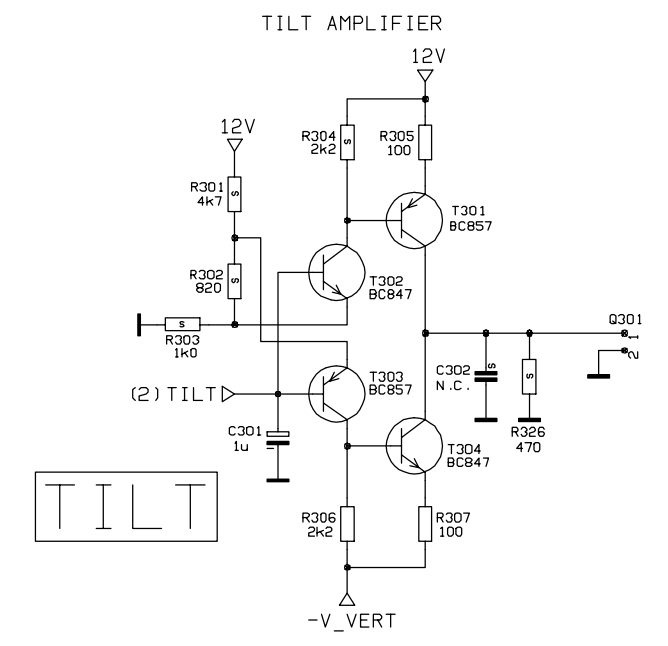
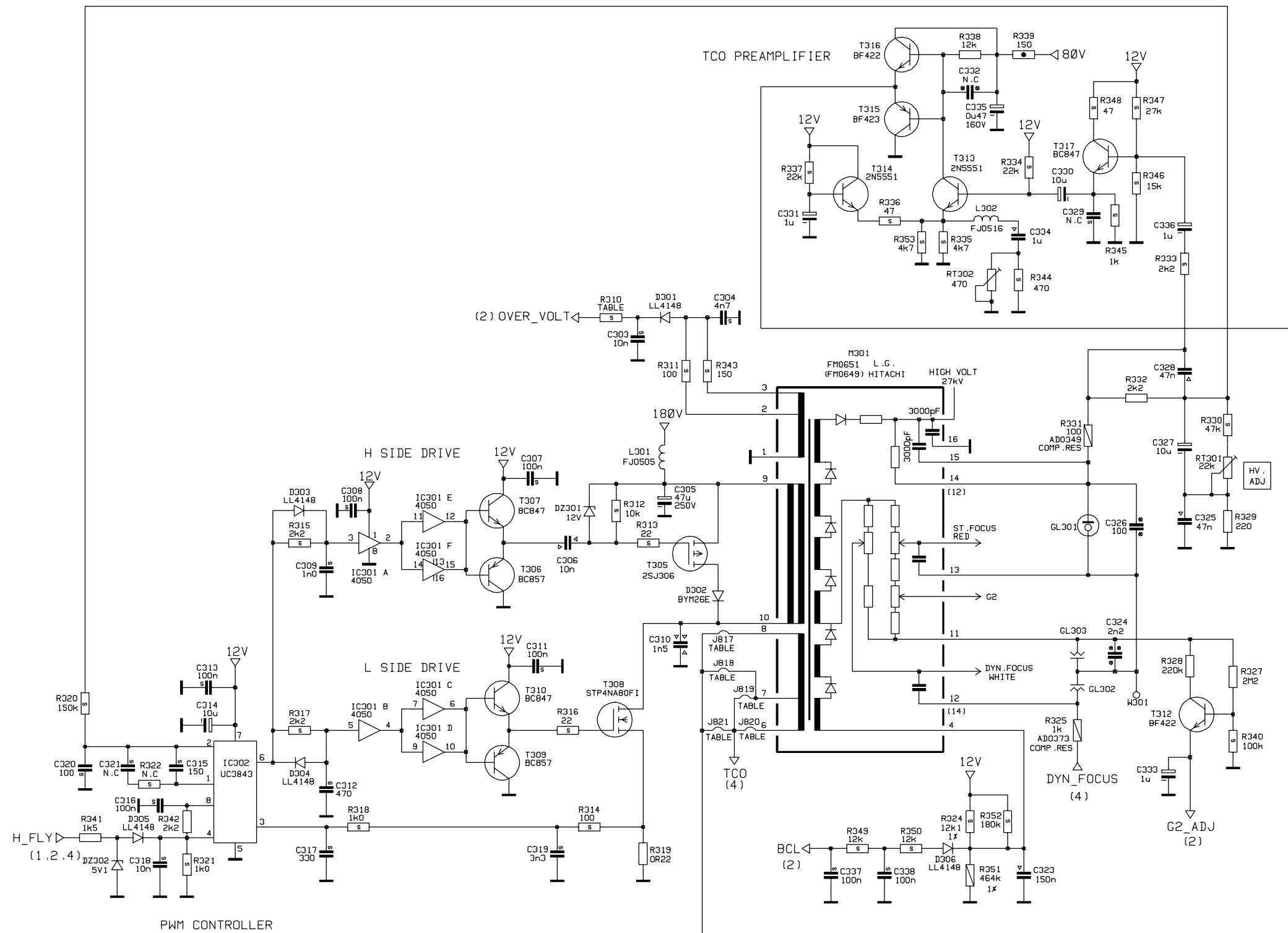
	CERAMIC	POLYPROPYLENE	POLYESTHER POLYCARBONATE
	≤ 63 V	≤ 63 V	≤ 63 V
	≤ 160 V	≤ 160 V	≤ 160 V
	≤ 250 V	≤ 250 V	≤ 250 V
	≤ 500 V	≤ 500 V	≤ 400 V
	≤ 1,5 kV	≤ 1,5 kV	≤ 1,5 kV

DEFLECTION PROCESSOR

PROCESSOR



ECN
447022



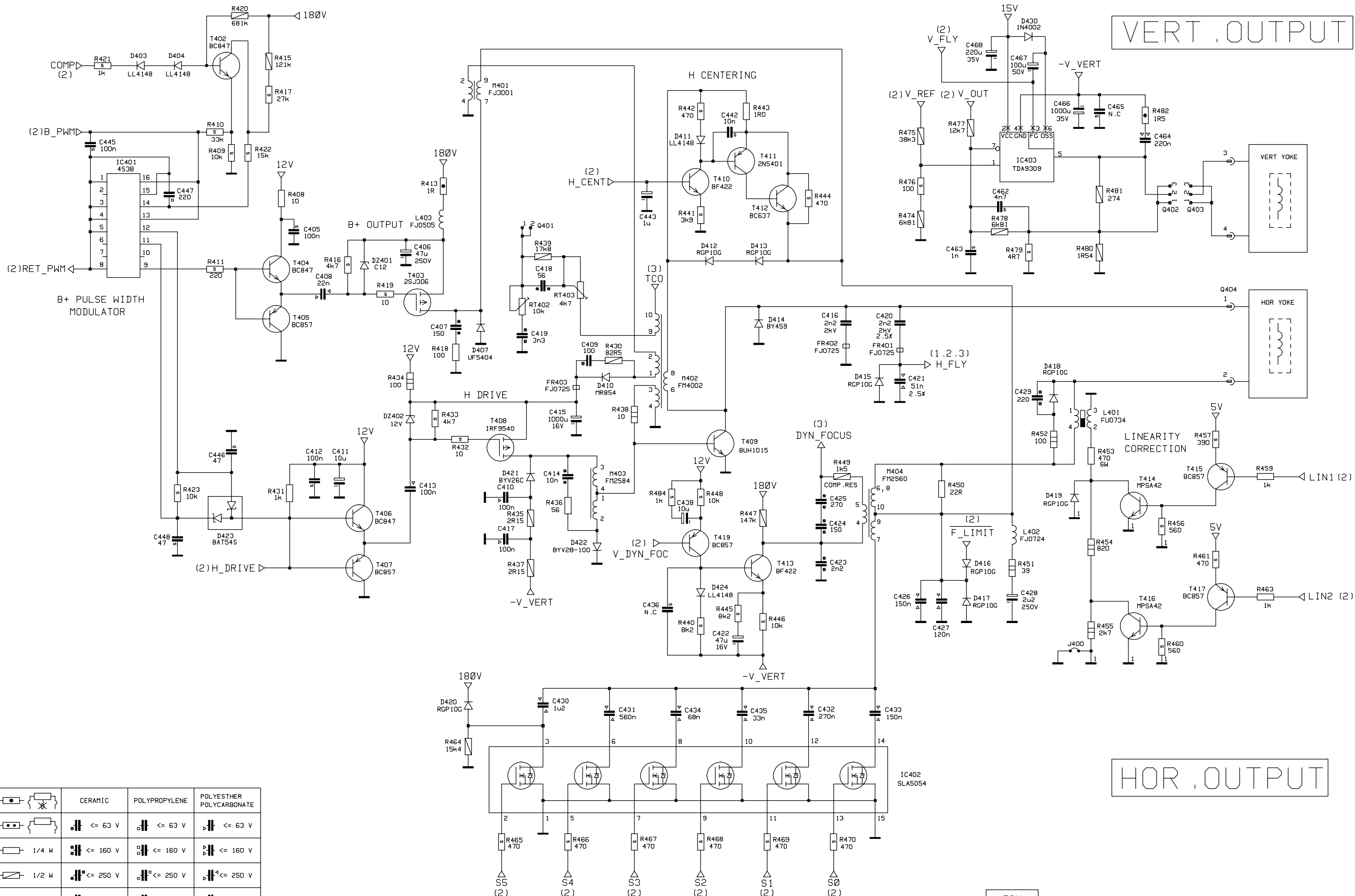
JUMPER ALTERNATIVES

M301	FM0649	FM0651
J817	C.	N.C.
J818	N.C.	N.C.
J819	N.C.	N.C.
J820	C.	N.C.
J821	N.C.	C.
R310	2k2	4k7

	CERAMIC	POLYPROPYLENE	POLYESTHER POLYCARBONATE
	• ≤ 63 V	• ≤ 63 V	• ≤ 63 V
	1/4 W • ≤ 160 V	• ≤ 160 V	• ≤ 160 V
	1/2 W • ≤ 250 V	• ≤ 250 V	• ≤ 250 V
	1 W • ≤ 500 V	• ≤ 500 V	• ≤ 400 V
	2 W • ≤ 1,5 kV	• ≤ 1,5 kV	• ≤ 1,5 kV

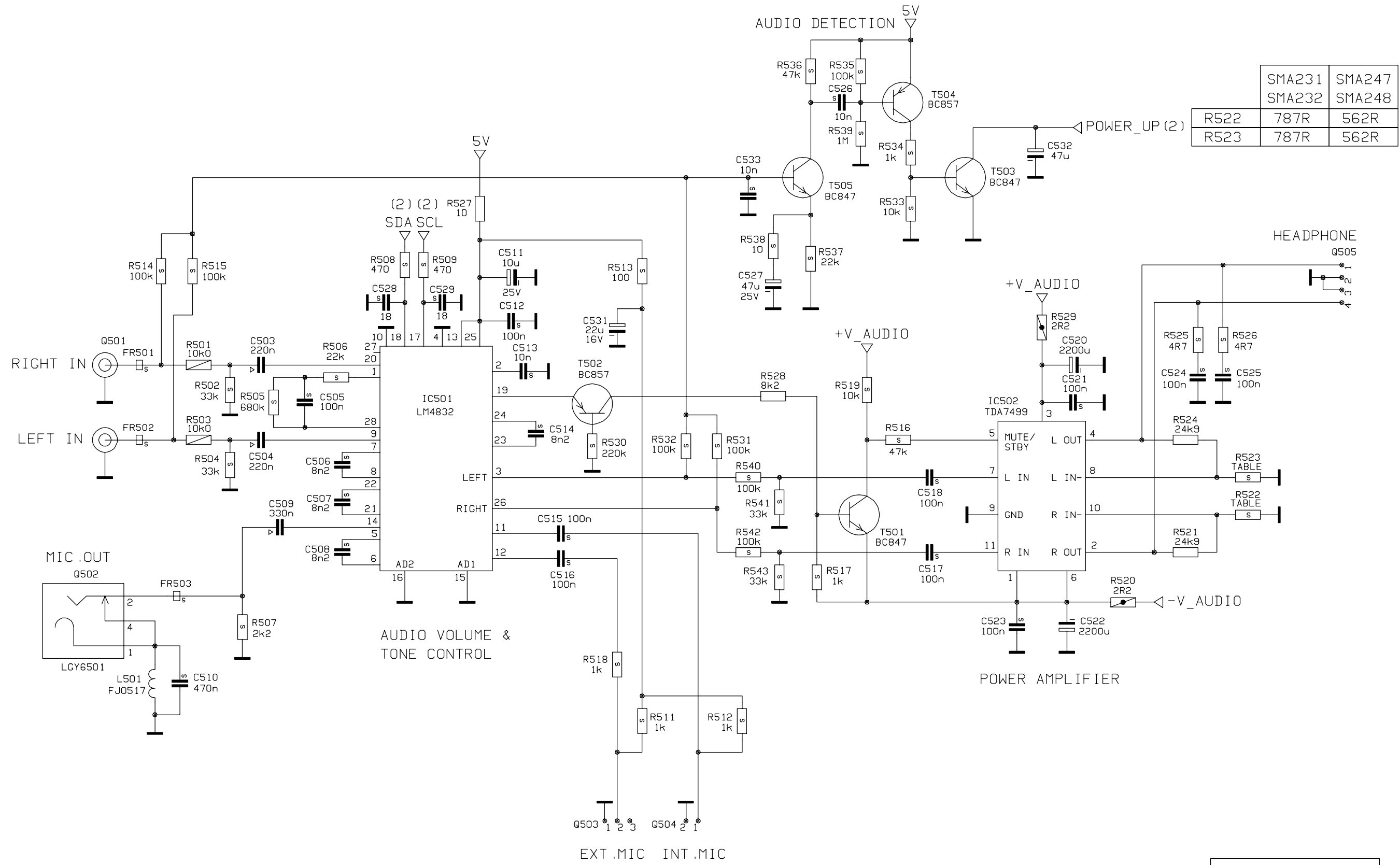
HV GENERATOR

ECN
447022



	CERAMIC	POLYPROPYLENE	POLYESTHER POLYCARBONATE
	$\leq 63 \text{ V}$	$\leq 63 \text{ V}$	$\leq 63 \text{ V}$
	$\leq 160 \text{ V}$	$\leq 160 \text{ V}$	$\leq 160 \text{ V}$
	$\leq 250 \text{ V}$	$\leq 250 \text{ V}$	$\leq 250 \text{ V}$
	$\leq 500 \text{ V}$	$\leq 500 \text{ V}$	$\leq 400 \text{ V}$
	$\leq 1,5 \text{ kV}$	$\leq 1,5 \text{ kV}$	$\leq 1,5 \text{ kV}$

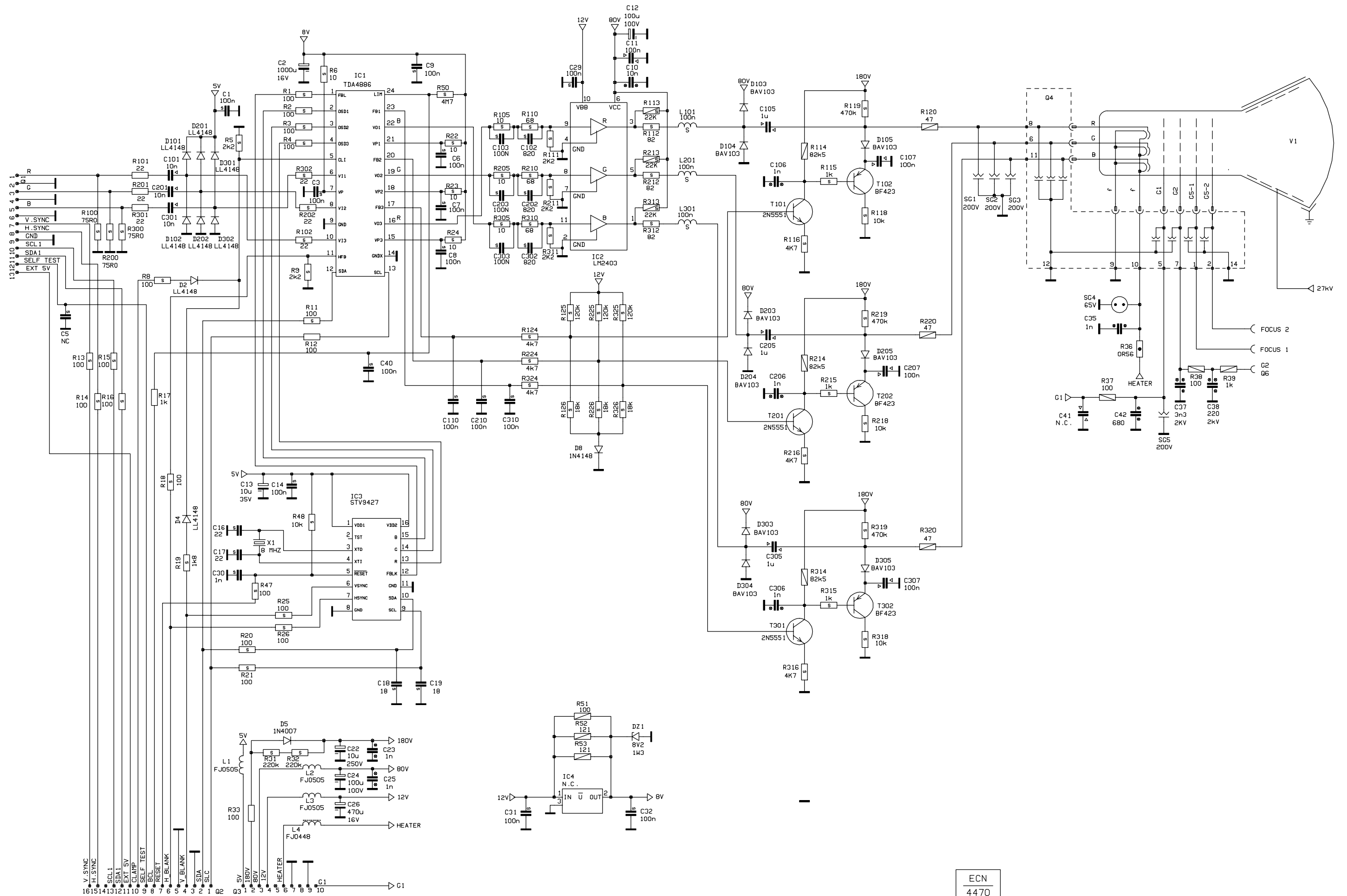
ECN
447022



	SMA231	SMA247
	SMA232	SMA248
R522	787R	562R
R523	787R	562R

AUDIO

ECN
447022



ECN
4470

4.2. Service Menu

4.2.1. Access to Service Mode

Activate the service mode always in 79.976 kHz/75 Hz (NCE605).

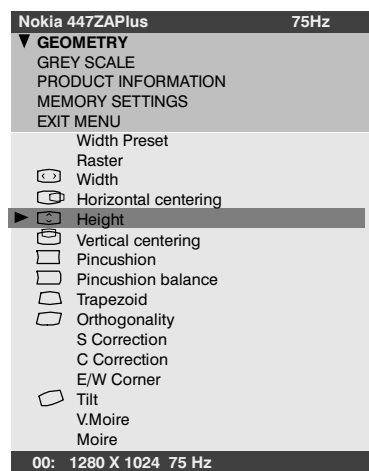
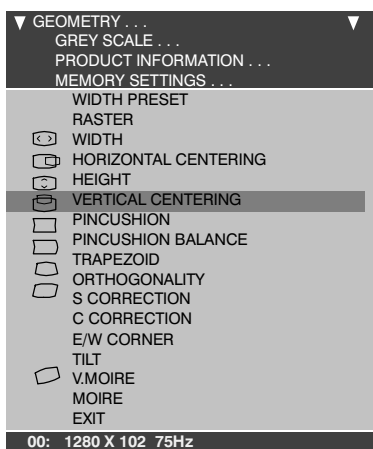
First switch OFF the monitor with power switch.

- 1) Push **←** button down.
- 2) While keeping **←** button down, switch ON the monitor.
- 3) Release **←** button **when the power-on indicator is illuminated.**
- 4) Press **←** button.
- 5) Monitor ask password. Type the password (7711) with the – /+ buttons.
- 6) Press **←** button.

Select the items in the Menu with the – or + buttons. Push the **←** button to open Geometry, Grey Scale, Product Information or Memory Settings. Adjust each property with the – or + buttons.

4.2.2. Geometry

Geometry submenu contains placement, size and shape adjustments.



4.2.3. Grey Scale

This monitor has six preset tints. With tint numbers smaller than 3 the picture becomes reddish and with tint numbers greater than 3 the picture turns blue.

Tint no	1	2	3	4	5	6	7
Colour Temperature	5000K	6000K	6500K	7000K	8000K	9300K	10000K

The grey scale adjustment affects directly tint number 6 (9300K) only. Other tints are derived automatically from 9300K colour temperature.