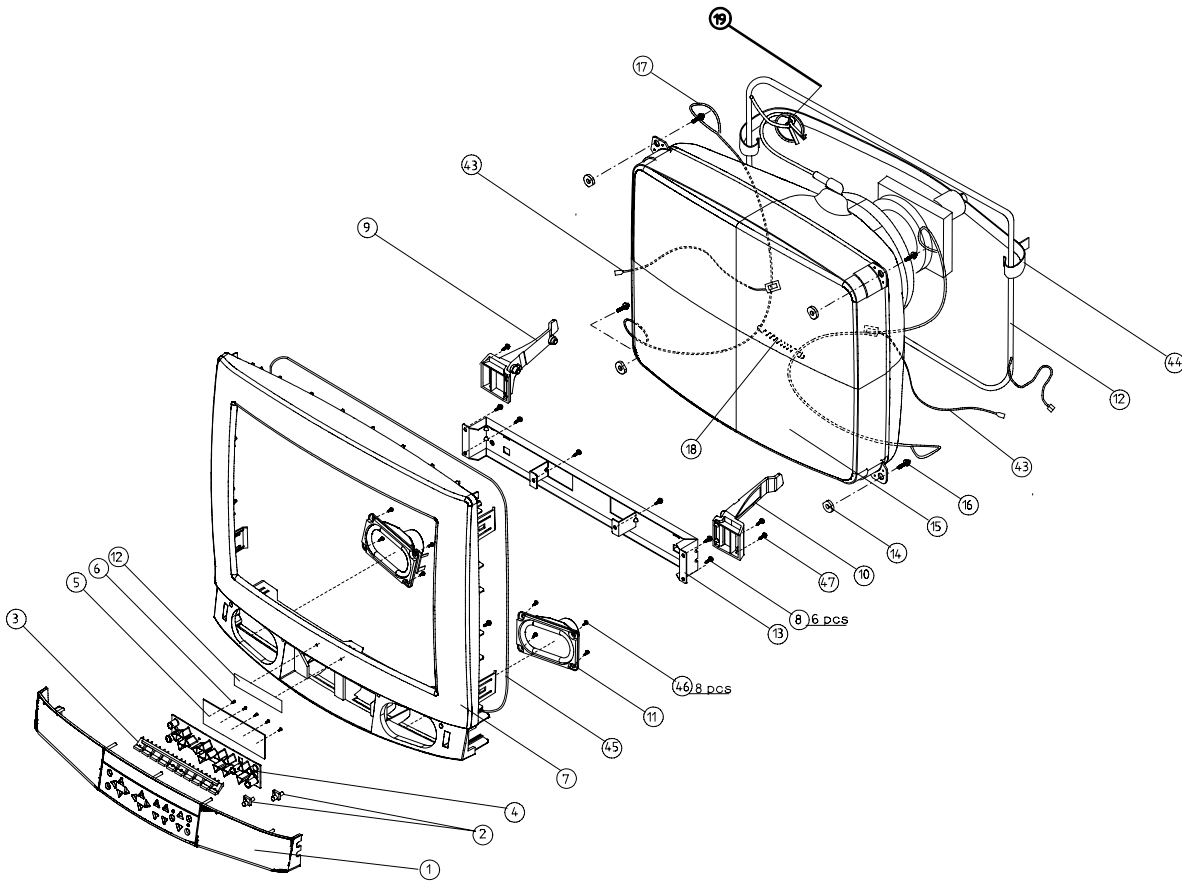


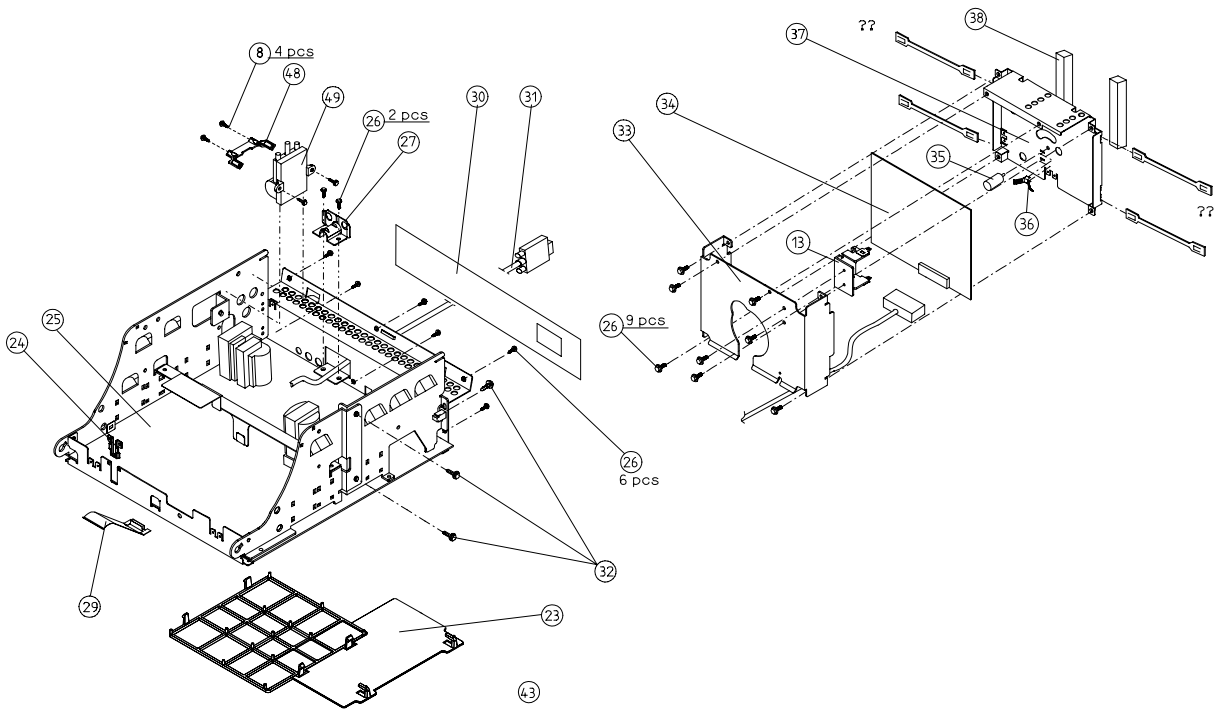
Spare Parts

Production P/N	Description	Emission
447Z051	17" NOKIA FST AUDIO EUR	TCO
447Z059	17" NOKIA FST AUDIO USA	TCO

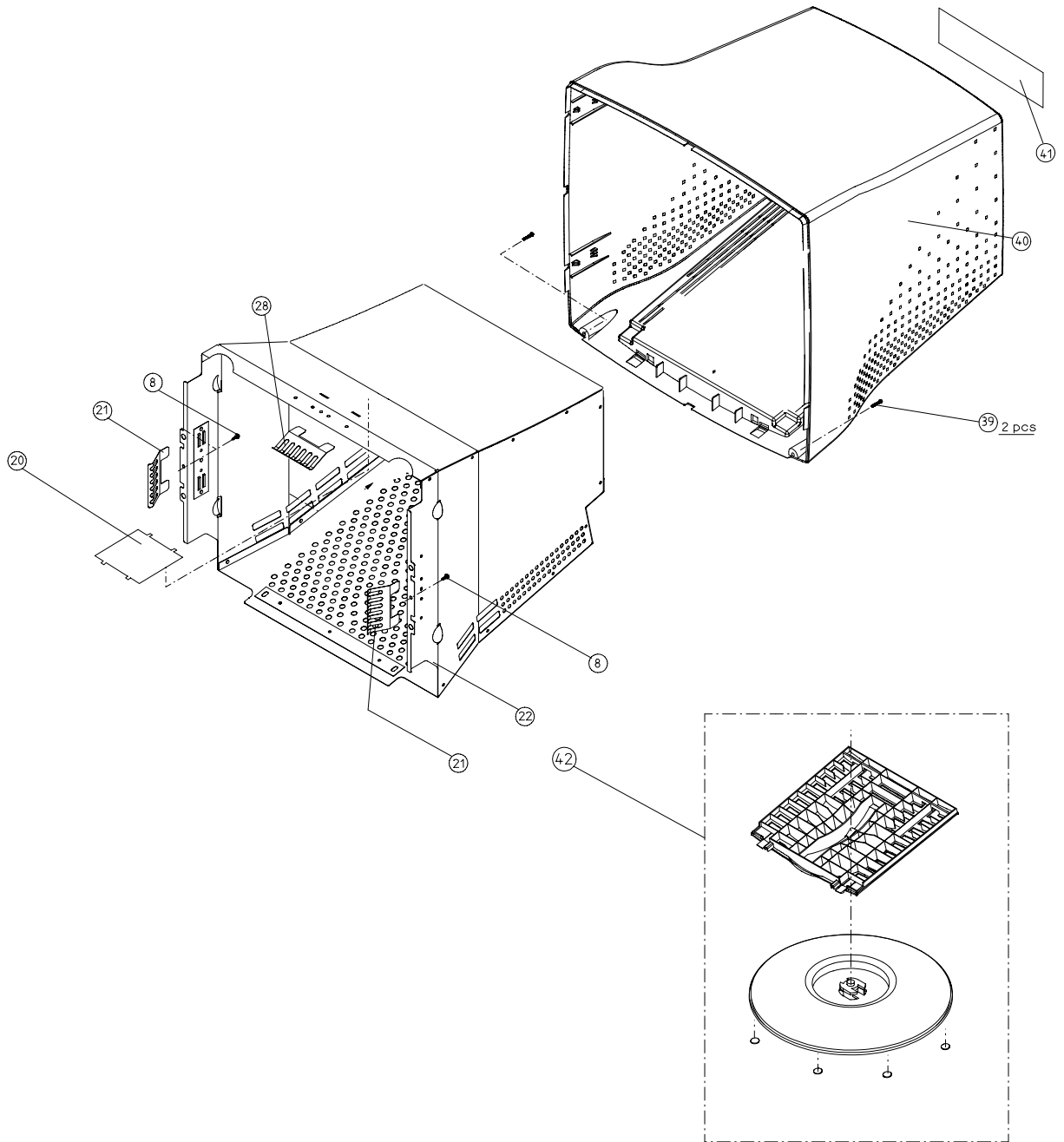


Item no	Description	Code	PG	447Z
01	Control panel	UA7560A	12	
02	Light Pipe	UA7118	02	
03	Light Pipe	UA7109	03	
04	Keypad	QG0294	09	
05	Control module	SMY041	21	
06	Pt-screw KB30x6 WN1442	WC0350	01	
07	Front cover	UM7650	21	
08	Pt-screw KB40x10 WN1447	WC0353	01	
09	Hinge left	UG0697	06	
10	Hinge right	UG0698	06	
11	Loudspeaker 5W 8 OHM	QP0232	21	
12	NOKIA badge	UA1243	08	
13	Support shield	UC6901	06	
14	Friction plate	UL0131	01	
15	Picture tube M41LKZ180X44(T)	NM1017	64	
16	Pt-screw K50x33 WN1446	WC0448	02	
17	Ground wire	SE2692	05	
18	Ground spring	UC3016	02	
19	Wire holder	UJ0220	05	
43	Ground wire	SE2691	03	
44	Degaussing coil holder	UG1013	03	
45	TCO-wire	SE2686	04	

46	Pt-screw KB35x8 WN1441	WC0347	01	
47	Screw UNI6950	WC0036	01	



Item no	Description	Code	PG	447Z
08	Pt-screw KB40x10 WN1447	WC0353	01	
23	Support grid	UG0699	10	
24	Shield	UG1007	01	
25	Main board	SMA198	57	
26	Screw UNI6950	WC0036	01	
27	Strain relief	UC6801	08	
29	Ground spring	UC6880	08	
30	Connector label	ZZ2804	04	
31	Signal cable	QM0298	24	
32	Hexagon + torx 10 tapping screw 3,9 x 16 zn	WC0450	01	
33	Cover shield	UC6854	06	
34	Base module	SMH143	35	
35	Support pin	UG0778	01	
36	Ground spring	UC6691	03	
37	Base module shield	UC6855	05	
38	Cushion support	UA1318	03	
48	Support	UG1012	03	
49	Double Focus Pot.Met Block	AP1103	24	
50	Cooling plate	UC6853	04	
	Connector module	SMZ051	20	



08	Pt-screw KB40x10 WN1447	WC0353	01	
20	Insulator	UG1005	08	
21	Ground spring	UC6882	03	
22	Plate cover asembly	UC6894	21	
28	Ground spring	UC6897	04	
39	Pt-screw K40x20 WN1447	WC0354	05	
40	Back cover	UD0637	27	
41	Type label Audio	ZZ2804	04	
42	Stand assembly	UDX098	20	

Packing materials:				447Z
	Packing support Left/Right	ZA1892	18	
	Packing box	ZA2547	18	
Documents:				
	Users guide NOKIA EN FR SP	ZF5742	09	
	Users guide NOKIA GE IT SW FI	ZF5743	09	051

BLOCK DIAGRAM

