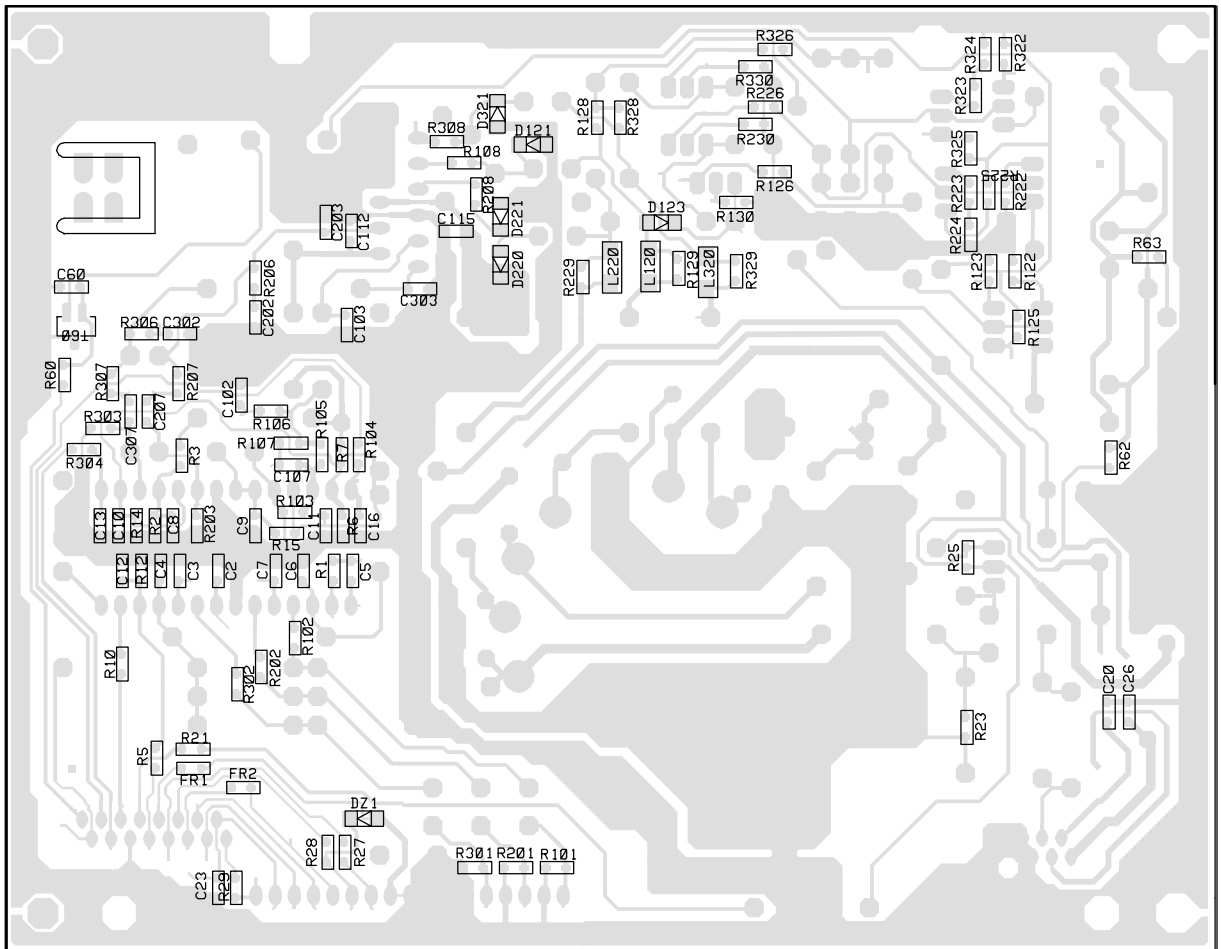
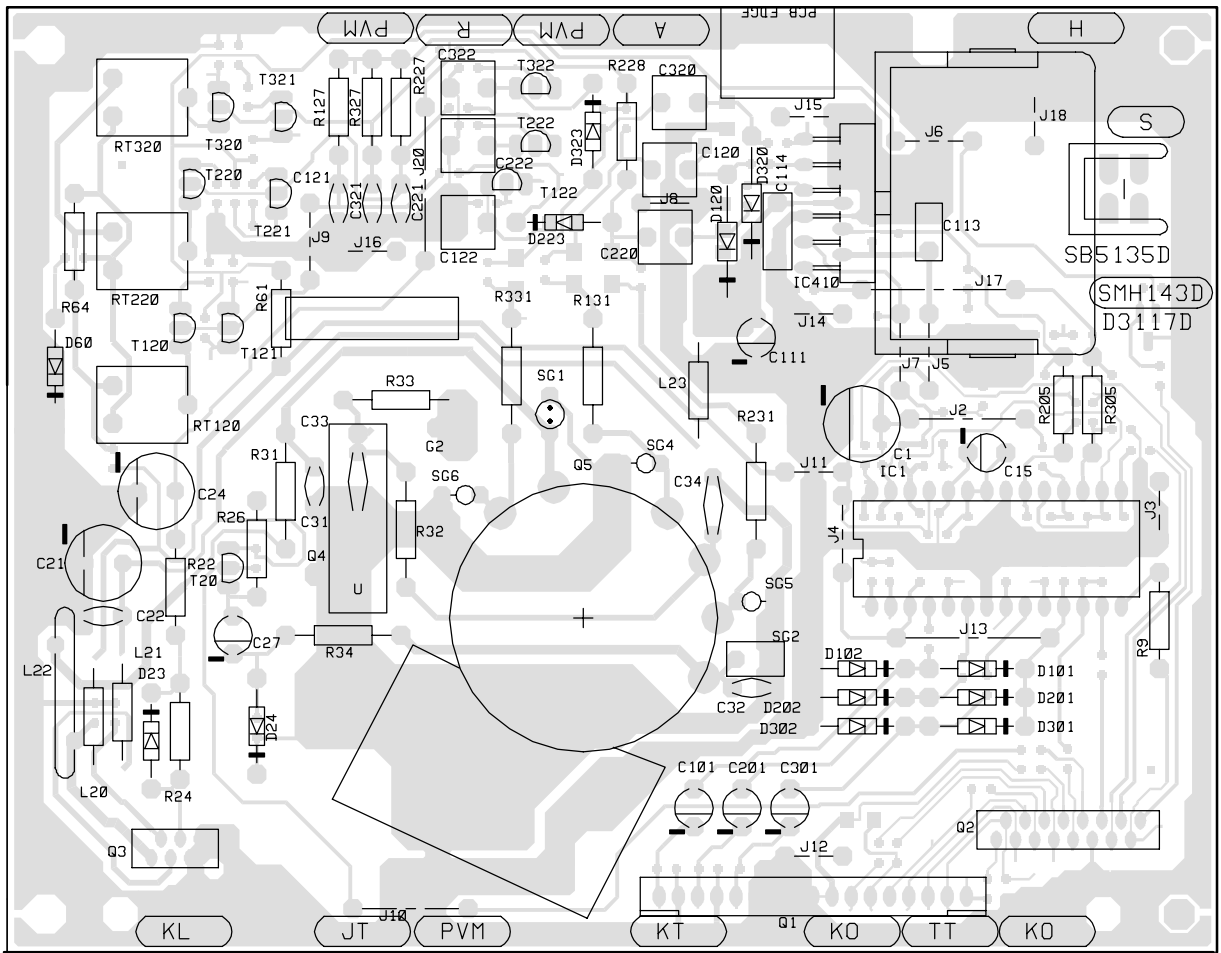


Part Number	Description	PG	Item Number
AA0649	CF RES 0W25 100R J 2,5-7	01	RH 205 305
AA0673	CF RES 0W25 1K0 J 2,5-7	01	RH 009 064
AA0693	CF RES 0W25 6K8 J 2,5-7	01	RH 061
AA0737	CF RES 0W25 470K J 2,5-7	01	RH 024
AA0745	CF RES 0W25 1M0 J 2,5-7	01	RH 228
AB0649	NF RES 0W25 100R J 2,5-7 CF	01	RH 022
AC3584	CHIPRES 0W1 75R 1% 0805 2013	01	RH 101 201 301
AC4400	CHIPRES 0W1 0R0 5% 0805 2013	01	RH 062
AC4425	CHIPRES 0W1 10R 5% 0805 2013	01	RH 015
AC4437	CHIPRES 0W1 33R 5% 0805 2013	01	RH 001
AC4441	CHIPRES 0W1 47R 5% 0805 2013	01	RH 102 202 302
AC4445	CHIPRES 0W1 68R 5% 0805 2013	01	RH 108 208 308
AC4449	CHIPRES 0W1 100R 5% 0805 2013	01	RH 027 028 105 125 225 325
AC4465	CHIPRES 0W1 470R 5% 0805 2013	01	RH 029 103 107 203 207 303 307
AC4469	CHIPRES 0W1 680R 5% 0805 2013	01	RH 129
AC4473	CHIPRES 0W1 1K0 5% 0805 2013	01	RH 010 021 126 226 229 326
AC4475	CHIPRES 0W1 1K2 5% 0805 2013	01	RH 063
AC4477	CHIPRES 0W1 1K5 5% 0805 2013	01	RH 329
AC4481	CHIPRES 0W1 2K2 5% 0805 2013	01	RH 002 025
AC4487	CHIPRES 0W1 3K9 5% 0805 2013	01	RH 324
AC4495	CHIPRES 0W1 8K2 5% 0805 2013	01	RH 224
AC4497	CHIPRES 0W1 10K 5% 0805 2013	01	RH 005 060 104 130 230 304 330
AC4499	CHIPRES 0W1 12K 5% 0805 2013	01	RH 003 106 206 306
AC4501	CHIPRES 0W1 15K 5% 0805 2013	01	RH 122 222 322
AC4505	CHIPRES 0W1 22K 5% 0805 2013	01	RH 006 014 223
AC4507	CHIPRES 0W1 27K 5% 0805 2013	01	RH 123 323
AC4513	CHIPRES 0W1 47K 5% 0805 2013	01	RH 012
AC4521	CHIPRES 0W1 100K 5% 0805 2013	01	RH 007 023
AC4545	CHIPRES 0W1 1M0 5% 0805 2013	01	RH 128 328
AD0341	COMPRES 0W5 47R K 4-11	03	RH 131 231 331
AD0349	COMPRES 0W5 100R K 4-11	01	RH 032
AD0361	COMPRES 0W5 330R K 4-11	01	RH 034
AD0373	COMPRES 0W5 1K0 K 4-11	01	RH 033
AG3543	MF RES 0W5 27K4 F TC50 2,5-7	01	RH 026
AG3601	MF RES 0W5 100K F TC50 2,5-7	01	RH 127 227 327
AQ2217	TPMET.AA H10 10K RM 5X10 6-HOLE	03	RTH 120 220 320
CA0306	CERCAP Y5T 220P M 2KV Y7,5 D9	02	CH 034
CB3159	CHIPCERCAP NP0 220P 50V J 0805	01	CH 102 107 202 207 302 307
CC0130	CERCAP Y5P 220P K 500V Y5: D8	01	CH 032
CC0200	CERCAP Y5P 1N0 K 500V Y5: D9	01	CH 022 031 121 221 321
CC3220	CHIPCERCAP X7R 1N5 10% 50V 0805	01	CH 020 023 026
CC3320	CHIPCERCAP X7R 10N 10% 50V 0805	01	CH 060
CC3580	CHIP CERCAP Y5V 100N Z 50V 0805	01	CH 002 003 004 005 006 007 008 009 010 011
CC3580	CHIP CERCAP Y5V 100N Z 50V 0805	01	CH 012 013 016 112
CE2454	IMPCAP 18N J 1K6V Y22,5 081727	06	CH 033
CK0283	PESCAP MKT 100N K 250V Y5 070812	02	CH 120 122 220 222 320 322
CK1388	PESCAP MKT 10N K 250V Y7,5 040911	02	CH 114
CK2704	PESCAP MKT 220N K 63V Y5: 040908	03	CH 113
CN2029	ELCAP 4U7 M 100V RM5: 105' 6X12	03	CH 027 111
CN2032	ELCAP 10U M 50V RM5: 105' 6X12	01	CH 101 201 301
CN2038	ELCAP 10U M 200V RM5 105' 10X16	04	CH 024
CN2372	"ELCAP 22UF M 35V RM5: 105' 6X12"	03	CH 015
CN2461	ELCAP- 47U M 100V RM5 105, 10X16	04	CH 021
CN2642	ELCAP 470U M 16V RM5: 105' 11X21	04	CH 001
FA0016	CHIP COIL 470NH 10% SIZE 1210	03	LH 120 220 320
FA4000	CHIP INDUCTOR 600OHM 200MA 0805	01	FRH 001 002
FJ0448	CHOKER 13UH FERRITE 2X15	02	LH 022
FJ0505	CHOKER 15UH 5% TAPED AXIAL	02	LH 020 021 023
JF0025	DI 1N4148 75V 200MA 4N	01	DH 060 101 102 201 202 301 302
JF0067	DI 1N4007 1000V 1A	01	DH 023
JF0072	DI BAV21 200V 250MA 50N	01	DH 024 120 223 320 323
JF4003	DI BAV103 200V 250MA 50NS SOD-80	07	DH 121 123 220 221 321
JH4218	ZDI BZV55C5V6 5V6 5% 500MW SOD80	02	DZH 001
JM0205	TR BF423 P 250V 25MA 60M:	03	TH 122 222 322
JM0244	TR BF422 N 250V 25MA 60M:	02	TH 120 121 220 221 320 321
JM0280	TR 2N5401 P 150V 0.6A 100M	02	TH 020
JM4114	TR BC857B P 45V 100MA 150M:	02	TH 060
LM0924	IC LM1207N VIDEO AMP.3-CH 85MHZ	15	ICH 001
LM0960	IC LM2405 MONOL. TRIPLE CRT DRV.	19	ICH 410
QK1606	"CRT SOCKET FOR 17"" HITACHI NEAT"	13	QH 005
QK1415	CRIPLET CONN FOR 2-SIDED PCB	01	
QK1466	ROW CONN 1X17 2,54 VERT	05	QH 001
QK1702	PICOFLEX HEADER 1X06 1,27MM	03	QH 003
QK1707	PICOFLEX HEADER 1X16 1,27MM	04	QH 002
QK1715	BASE PIN COPPER 2.35X0.25X13.2	02	GH 002
QT0002	SPARK GAP 1,2KV +-500V R=5,0MM	03	SGH 002
QT0051	SURGE PROTECTOR 300V R=5,0MM RAD	10	SGH 004 005 006
QT0217	GLIMM LAMP 65V 6*16MM	03	SGH 001
XS0094	WIRE TINNED COPPER D=0,60MM	21	
UC6853	COOLING PLATE 449R	04	
UC6854	COVER SHIELD 449R	06	
UC6855	BASE MODULE SHIELD 449R	05	
UC6896	GROUNDING SPRING 447S	02	
UG0778	SUPPORTPIN/TUKINASTA PN49951 447E	01	
WC0036	KUUS.KAN.LEVYR.UNI6950 SCREW	01	
WN0168	RIWSCREW 1712-3510	03	
XW0032	L_MP.JOHT.RASVA DOW CORNING	03	ICH 410





SMH143D

1